

ELECTRO  
LIGHT

---

COMPANY PROFILE

---

02 MARCH 2011

---

---

Electrolight  
info@electrolight.com.au  
www.electrolight.com.au

---

L2, 59 Hardware Lane  
Melbourne 3000  
T + 61 3 9670 2694  
F + 61 3 9670 7914



---

## IDENTITY

---

Established in 2004, Electrolight is an award winning, independent lighting design consultancy located in the heart of Melbourne's CBD. Directed by Paul Beale, a team of industry professionals work in a studio office environment on projects covering the full range of lighting for the built environment.

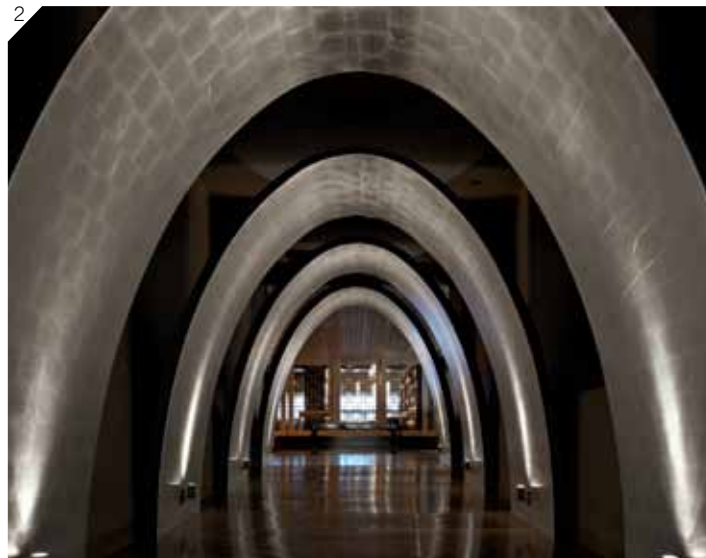
Electrolight employs a highly experienced team who are passionate about light and its ability to enhance and transform. We draw people from industries as diverse as engineering, theatre design, interior design, industrial design and computer modeling and drafting. Electrolight enjoys a prestigious national and international presence through our acclaimed project work across the interior, exterior and cultural sectors.

1. Westfield Sydney City  
Photo: Torsten Blackwood

2. Duck Duck Goose  
Photo: Earl Carter

3. Melbourne Recital Centre  
Photo: Shannon McGrath

# ELECTROLIGHT



## APPROACH

Electrolight is dedicated to providing our clients with creative and technical excellence in all aspects of lighting design through diversity and innovation. With an approach that places collaboration, integrity and passion at the centre of all that we do we have developed a confidence in our work that allows us to deliver projects that have earned the respect of our peers and industry. We are committed to helping sustain and develop our profession as a whole and deliberately invest in educational initiatives, industry lectures and paper presentations, article writing for periodicals, sponsorships and design competitions.

With over 200 projects ranging from theatres to art galleries, restaurants to retail outlets, port facilities to major road works, and sports stadia to sky-scrapers, Electrolight has developed standards of excellence in inspired design, thorough documentation and creative concept presentation. Our commitment to the collaborative process with architects, clients and project teams is paramount and is mirrored in the strong relationships we have fostered and nurtured with suppliers, custom manufacturers and allied consultancies around Australia.

As a company we draw inspiration from world's best practise in lighting design and engage in ongoing research to stay at the forefront of new ideas and developments in products, technologies and environmental challenges.

1. Crown Casino Chandelier

Photo: Peter Bennetts

2. 31 Queen Street Foyer

Photo: Peter Bennetts

3. AAMI Park Stadium Facade

Photo: Peter Glenvale

# ELECTRO LIGHT



## AWARDS

### 2010

IES Victorian Award of Excellence for Lighting Design, AAMI Park Stadium  
 IES International Award of Excellence for Lighting Design, MTC Theatre  
 IES International Award of Excellence for Lighting Design, Robina Light Sculpture

### 2009

IES Victorian Award of Excellence for Lighting Design, MTC Theatre  
 IES Queensland Award of Excellence for Lighting Design, Robina Light Sculpture  
 IES Victorian Award of Excellence for Luminaire Design, Crown Casino Fireworks Chandelier  
 IES Victorian Award of Commendation for Lighting Design, University of Melbourne Faculty of Economics and Commerce

### 2008

IES Victorian Award of Commendation for Lighting Design, Bistro Guillaume at Crown

### 2007

IES Victorian Award of Commendation for Lighting Design, Tullamarine Calder Interchange

## COMMUNITY

Light in Winter - The Meaning of Light 2010, 2011  
 State of Design - Lightcycle. Light fixture design competition 2007, 2009, 2011  
 Professional affiliation with IALD & IES  
 Carnival of Mysteries /Tent of Miracles -Snow Queen  
 Mirror Design with Finucaine Smith  
 Midsumma Festival 2010 - Lighting Installation  
 Moving Ringwood Art Project - Lighting Installation

1. Crown Diamond  
Photo: Peter Bennetts  
4. Duck Duck Goose Art  
Photo: Earl Carter

2. Crown Westend  
Photo: Peter Bennetts  
5. Restaurant Bistro Guillaume  
Photo: Earl Carter

3. Crown Westend  
Photo: Peter Bennetts

# ELECTRO LIGHT



1. Westgate freeway portals

Photo: Peter Bennetts

2. Melbourne Theatre Company

Photo: Shannon McGrath

3. State Theatre Centre of Western Australia

Photo: Robert Frith

4. Heide Museum of Modern Art

Photo: Shannon McGrath

5. Watergardens Shopping Centre

Photo: Peter Bennetts

# ELECTROLIGHT



1. Restaurant Bistro Guillaume  
Photo: Earl Carter

2. 500 Bourke Street  
Melbourne

Photo: Peter Bennetts

3. University of Melbourne  
Economics Commerce  
Building

Photo: Peter Bennetts

4. Heide Museum of Modern  
Art

Photo: Shannon McGrath

# ELECTRO LIGHT

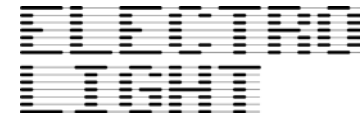


1. Staff Photo

Photo: Michael Castledine

2. Canberra Centre Light Sculpture

Photo: Electrolight



---

PRACTICE

---

DIRECTOR

Paul Beale

PRACTICE MANAGEMENT

Elisha Howard

SENIOR ASSOCIATE

Rachel Burke

ASSOCIATES

Ben Lüder

Jess Perry

Mark Turebridge

LIGHTING DESIGNERS

Dave Anderson

Tomas Kalnajs

Amelia Kendall

Rosana Saleme

Electrolight

L2, 59 Hardware Lane

Melbourne 3000

T + 61 3 9670 2694

F + 61 3 9670 7914

info@electrolight.com.au

www.electrolight.com.au

CONTACT

Elisha Howard

AUSTRALIAN BUSINESS NUMBER

93 288 579 088

PUBLIC LIABILITY

03.09.2011

Vero Insurance Limited

\$20,000,000

PROFESSIONAL INDEMNITY

03.09.2011

Lloyd's, London

\$30,000,000

WORKCOVER

30.06.2011

Allianz

Policy No. 11435253

